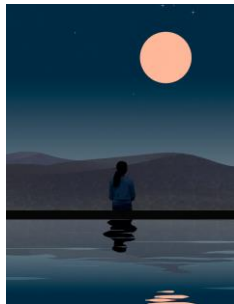


New layout of Roots material

Read John 1.43-51

A short scene where Jesus finds Philip and he accepts Jesus' invitation to follow him straight away. Philip then finds Nathaniel, but he is not so keen. Philip simply invites Nathaniel to 'Come and see', to meet Jesus for himself and understand who he is.

Philip invited Nathaniel to 'Come and see'. We may not feel like we have the opportunity to see Jesus in the way that Nathaniel did. But we can see God at work, and we can learn more about God from what we see every day. Choose a household object – ideally, do this in a group with others, or share your thoughts with others – and use it to explain something about the way you see God, e.g. a colander – God filters out what you don't need so that you are left with the good things. Share your object and idea, and discuss the various ways we can see God and what God is like.



Jesus said that he knew Nathaniel because he had seen him sitting under the fig tree. The fig tree is a symbol of peace, and it was common to sit undisturbed under its branches to meditate or pray. Where do you find peace? What helps you come to God in prayer? Perhaps you could go outside and find a sheltered spot by a tree, or maybe set aside a comfortable space in your house. Work out what environment best helps you to come, hear or see God.

If you can't find/create the right environment, use this image to help you find peace and spend time with God.



Wesley Methodist Church

Minister: Revd. Josephine Soon 01384 821854

Link for on line worship

<https://www.valeofstour.org.uk/virtual-church/live/vosworship>

Newsletter: Sunday 17th January 2021

Weekly Hymn - A hymn to go with the bible reading

Will you come and follow me if I but call your name?
Will you go where you don't know and never be the same?
Will you let my love be shown? Will you let my name be known,
will you let my life be grown in you and you in me?

Will you love the "you" you hide if I but call your name?
Will you quell the fear inside and never be the same?
Will you use the faith you've found to reshape the world around,
through my sight and touch and sound in you and you in me?

Lord your summons echoes true when you but call my name.
Let me turn and follow you and never be the same.
In Your company I'll go where Your love and footsteps show.
Thus I'll move and live and grow in you and you in me.

Church Contact: Margaret Kite 01384 392310

As always, Stay safe God Bless

Re the late Ann Homer – great friend of Wesley

From Josephine:- "I have spoken to Keith Homer, the funeral date for the late Ann Homer will be on the 26th Jan 2021, 12.30pm at Gornal Crematorium. Please do not attend the funeral service unless you have been directed contact by the family. I am sure everyone will understand the Lockdown Rules and support the bereave family the best we can through cards and prayers for them. Thank you."

Also please remember Lynne Dunn and family in your prayers following the death of her Mother.